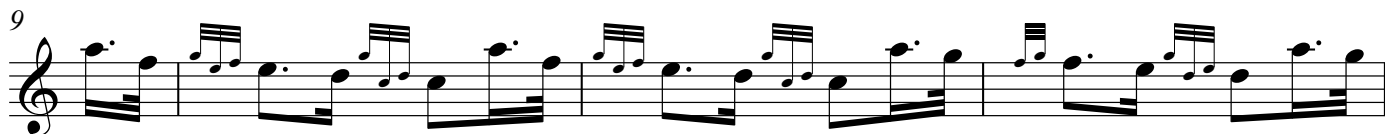


The Return of the King

N.E.Whitehead



The image displays six staves of musical notation, all in treble clef. The notation is complex, featuring a variety of rhythmic patterns. The first staff begins with a series of eighth notes, followed by a mix of eighth and sixteenth notes, and ends with a double bar line. The second and third staves are filled with dense sixteenth-note passages, often in pairs or groups of four. The fourth staff continues with similar sixteenth-note patterns, interspersed with eighth notes. The fifth and sixth staves show a return to a more rhythmic pattern of eighth notes, with some sixteenth-note accents. The notation is clean and professional, typical of a printed musical score.